

Weimar Academy

At Weimar, our number one goal is to grow closer to Christ. We believe that when we talk with Him and choose to lovingly obey His desires for us, that happens.

School Handbook

2011-2012

Who We Are



Check here to find out what Weimar is all about.

Pages 1-2

Spiritual Focus

It's all about Christ! That's why we exist and the source of our strength. We desire to grow closer and closer to Him every day through PBS (Prayer, Bible Study & Service)

Page 3

Financial Information

Adventist Education is an investment with eternal benefits.

Pages 4-6



Admissions

Weimar Academy is not for everyone. Please check out our admissions policy to see if we are the right fit for your child and family's needs

Pages 7-9

Campus Life



At Weimar, we desire to be joyfully intentional in what we say and do.

Pages 10-19

Academics

When you educate students following God's model, the results produce youth who are "thinkers and not mere reflectors of other men's thought."

Ed p. 17
Pages 20-22



WHO WE ARE

"The purpose of education is to glorify God; to enable men and women to answer the prayer, "Thy kingdom come. Thy will be done in earth, as it is in heaven." Matthew 6:10 - CT p.229

Weimar Academy is not your typical school and our focus can not be contained on this planet alone. We set our eyes to Heavenly things and follow a Creator whose plans are eternal. We exist to glorify God and pledge our lives to worshipping Him alone, through our thoughts and actions. By His example, we seek



Nestled in between the Sacramento Valley and the Sierra Nevada Mountains, Weimar Academy sits on 457 acres of stunning natural beauty.

a life of intense worship, where the focus is on the serving of others and the loving obedience of God.

"The true teacher is not satisfied with second-rate work. He is not satisfied with directing his students to a standard lower than the highest which it is possible for them to attain." Ed p.29

We seek the highest possible standards in education for our students. That education is not merely academic, but includes the spiritual, physical, and social aspects as well.

We believe that when you educate students following God's model found in the Bible and the Spirit of Prophecy, the results produce youth who are "thinkers and not mere reflectors of other men's thought." They are "strong to think and to act, men who are masters and not slaves of circumstances, men who possess breadth of mind, clearness of thought, and the courage of their convictions." Ed p. 17



About Weimar Academy

Description

Weimar Academy, a boarding high school, is a supporting ministry of the Seventh-day Adventist Church and a member of Adventist-laymen's Services and Industries (ASI). The Academy, located in Weimar, California, is operated by Weimar Institute of Health and Education. The Institute also manages Weimar College and NEWSTART® Lifestyle Center on the same campus.

Weimar Institute is owned and managed by a 501(c)3 nonprofit corporation (Weimar Institute Incorporated), whose purpose is to restore the image of God in man.

Weimar Academy bases its spiritual, educational, and lifestyle principles on the Bible as the inspired Word of God and on the writings of Ellen G. White.

Location and Climate

Weimar Academy is located on 457 acres of wooded land in the foothills of the Sierra Nevada Mountains at an elevation of 2,250 feet. It is just off California's Interstate 80, 45 miles northeast of Sacramento and about

45 miles southwest from Lake Tahoe. Both San Francisco (west) and Reno, Nevada (northeast) are approximately ninety miles from the school. Winters are mild (30/40-degrees Fahrenheit), with occasional snow and frequent rainfall. Daytime summer temperatures can rise above 100 degrees. Spring and fall are mild and sunny.



Facilities

The ladies' and men's dormitories each house twenty-four students and have a large living room which provides a warm, home-like atmosphere for worships or visiting. Classes and chapel meetings are held

in the Academy Center, located on the ground floor of the men's dormitory, as well as on the main Institute campus for music. The cafeteria and most student work assignments are located on the main campus as well.

Accreditation

Weimar Academy's program, based on the principles of true education (as outlined in the Bible and Spirit of Prophecy), provides a wholesome balance of spiritual, mental, and physical training. It seeks to meet God's standards for true education, and operates under an approved status from the State of California.

However, Weimar Academy has not chosen to seek regional accreditation. Weimar's academic program (college preparatory or general) meets or exceeds the scholastic expectations of other accredited institutions in terms of curricular quality and verifiable evidence of student achievement (as shown on standardized test scores). Graduates are readily accepted by Christian or secular colleges and universities.

Spiritual Focus



"But seek ye first the kingdom of God, and his righteousness; and all these things shall be added unto you." Matthew 6:33

It's all about Christ! That's our focus and the source of our strength here at Weimar Academy. We desire to grow closer and closer to Him every day through P.B.S.

Prayer

"Prayer is the breath of the soul. It is the secret of spiritual power. No other means of grace can be substituted, and the health of the soul be preserved." GW p.254, 255

You cannot have a healthy relationship without communication and this is why we talk to God. The faculty and students intentionally take time every day to pray to our Creator and Best Friend.

Bible Study

"Your word I have hidden in my heart, That I might not sin against You!" Ps 119:11

It is important to not just speak to God, but to listen to Him as well. By reading God's Word, we hear what He wants to say to us. His Word is powerful and changes us. This is why we set aside time each day to do this as well.

Service

"The restless energy that is so often a source of danger to the young might be directed into channels through which it would flow out in streams of blessing. Self would be forgotten in earnest work to do others good." DA p.640

We believe that the fruit of an authentic relationship with Jesus is manifested in loving service to others. Whether it is on a mission trip, in a Bible study, or in meeting the local needs of our community, Weimar is constantly looking for opportunities to serve others and show them the love of Jesus.



At Weimar, we are unashamedly focused on seeking Christ first. A loving relationship with Jesus is paramount in this life and the life to come.



Financial Information

Adventist Education is an investment that has eternal returns.

School Fees

School fees are made on a monthly basis and are based on a 10 month payment plan.

The following charges apply for the 2012-13 academic year:

Tuition cost is \$7,500 per year

Room cost is \$2,620 per year

Board cost is \$4,200 per year

Non-Refundable Registration Fees

Boarding Student - \$750

Village Student - \$575

Part-Time Student - \$300

Refundable Room Deposit \$75

Refundable Computer Deposit \$100

Total cost is \$15,245 per year

Students may earn approximately \$2000 per year towards their school bill while in a paying campus job.

Upon receiving notification of acceptance, the student will need to submit an advance deposit of \$200 to guarantee a space at Weimar Academy (international student advance deposit is \$2500—see

International Student Fees). This nonrefundable deposit will be applied toward the fees due at registration.

Fees due at registration include:

First month's tuition, room, & board plus registration fees totaling \$2,357.

Village student's fees that are due at registration are first month's tuition plus registration fees totaling \$1425.

Uniforms - Approximately \$150.

Additional fees may include:

Music

Private instrument or voice lesson fees are \$210 per semester. This entitles the student to 14 lessons of 30 minutes each from Weimar Center staff. The whole semester amount is due at registration or beginning of second semester.

Transportation fees (for student's personal needs)

Trips to the Sacramento airport are \$50 when only one student is being transported, or \$30 per student if multiple students are taken at the same time. If transportation is

needed outside the normal shuttle times, personal arrangements will need to be made by the students and all drivers must be approved by the staff. Personal trip costs for dental, immigration, etc. vary by trip.

Graduation Fees

There is a graduation fee of \$100 for seniors. This helps to cover the cost caps and gowns, flowers, graduation site rental, and other misc. items.

International Student Fees

Students who are not citizens or permanent residents of the United States and its territories are required to send \$2,500 USD to the Academy before the student immigration form (I-20) is sent. One-half of that sum (\$1,250) will be applied directly to the student's first month's bill, and the remaining \$1,250 will be held on deposit until the student's enrollment is terminated, and the student has been transferred out of SEVIS program. At that time the \$1,250 will be refunded in the form in which it was sent less applicable costs, if any (e.g. an international wire transfer will cost a minimum of \$50). An additional fee of \$250 USD

Financial Information

will be charged to the student account for the additional costs involved in the admission process for international students. These additional costs include the processing of the I-20, trips to the Social Security Office, etc.

Health & Hospitalization

Insurance: Foreign students are required to arrange for their own health and hospitalization insurance. You may choose any suitable insurance company or you may use www.international-studenthealth-insurance.com The student will need to present a copy of the insurance paperwork at registration.

Health Care and Accident Insurance

Weimar Academy accepts no responsibility for student health care beyond minor outpatient care provided at the campus NEWSTART® Medical Clinic. A medical fee is included in the registration fee, which covers this care. The cost of any prescribed hydrotherapy treatments will be the parents' responsibility.

Major medical, dental, optical, or counseling expenses are the responsibility of parents or guardians. Parents will be asked to fill out a "Consent to Treatment" form for any emergency care that may be required while a student is enrolled at Weimar Academy.

The student accident insurance pays 100 percent of costs up to \$25,000 per injury. Benefits are payable for expenses incurred for up to one year from the date of an injury that

occurred on school premises or on a school-sponsored event (on or off campus) during the school year. This insurance will not cover injuries incurred while the student is on home leave or vacation.

In order for insurance to cover an injury, the accident must be reported as soon as the injury occurs.

Expenses for treatment must be incurred within 60 days after the accident. This policy covers only costs not paid by any other medical insurance the student might have. A \$5,000 Accidental Death and \$5,000 Dismemberment benefit is included. The charge for this health care and accident insurance is included in your registration fees.

Student Accident Insurance carried by the school is supplemental to any health insurance carried by student's parent or guardian.

Payment Options

1. Advance Payment Plan:

Under this plan, full payment of tuition, room and board, and miscellaneous fees for the school year is made before or at the time of registration. Academy students who pay annual Tuition, Room, Board and Fees in advance are entitled to five percent (5%) discount on Tuition only, provided the payment is made by check, money order, cash, or wire transfer. Credit card payments do not qualify for a discount. If the student withdraws during the first semester, the discount will no longer apply. If the student withdraws

during the second semester, half of the discount will be applied.

2. Monthly Payment Plan:

Payments will be due by the 15th of each month. Following the final month of school, a statement will be issued, reflecting any refund of deposits. Payments may be made by cash, credit card, check, bank check, wire transfer, or money order. Please include the student's name when making the payment. Money orders should be made payable to:

Weimar Institute
Student Finance Office
P.O. Box 486
Weimar, CA 95736

Family Discount

A discount of 5% on tuition only is allowed when two or more members of the same family are enrolled simultaneously as full-time students at the College and/or the Academy.

Delinquent Accounts

A returning student must settle any outstanding account balance before they may begin a new school year. Arrangements must be made with the Student Finance office if a monthly payment might be late. If the student's account becomes 60 days overdue, they may be asked to withdraw from school, and the account may be turned over to a collection agency. No final exams will be given unless the student's bill is paid in full or an acceptable arrangement has been made with the finance office.

Financial Information

Room Deposit Refunds

Room deposits will only be refunded if no repairs and no cleaning are required.

Student Bank

To prevent loss of personal cash, a student bank is available at the Business Office for deposits and withdrawals. It is strongly recommended that the student take advantage of this service to secure their money. These personal accounts are not related to a student's tuition accounts. Deposits into these personal accounts may not be made by credit card.

Literature Evangelism Scholarship

Students in an approved literature evangelist program during the summer will be granted a scholarship in addition to the amount earned through book sales. The scholarship is available in the form of tuition reduction applied to the student's account, and matches 50% of all monies forwarded to the academy by the conference or publishing entity. Half of the scholarship money will be applied each semester of the school year that the student is enrolled as a full-time student. Should the student leave school, any credit balance up to the amount of the scholarship will not be refunded to the student, but will be

returned to the Literature Evangelism Scholarship.

Summer Camp Grant

A summer camp grant of up to \$1,000 is available for students returning from a summer camp assignment in North America sponsored by the Seventh-day Adventist Church and conference-related organizations. The grant is based on 50% of the earnings up to \$1,000 paid to Weimar. The earnings need to be forwarded directly to Weimar Institute by the issuing organization in order to qualify for the grant. Students are encouraged to apply to the Student Finance Officer prior to leaving on assignment to ensure funding.





Admissions

Is Weimar right for you?

Who Should Apply?

Weimar Academy provides an environment of positive Christian living and a strong educational program for 30-60 students, primarily those of the Seventh-day Adventist Church. However, any young person who shares the philosophy of Weimar Academy and who chooses to live according to the same Biblical principles, is welcome to apply.

A purely academic program is accessible through any high school. However, Weimar's program is unapologetically geared toward helping young people reach their full potential:

"Higher than the highest human thought can reach is God's ideal for His children" Education p. 18

The following questions will assist you, as a potential student (or parent), to determine whether you (or your child) would benefit from Weimar Academy's unique program.

1. Have you accepted Jesus Christ as your personal Savior and Friend or are you actively seeking such a

relationship? Do you devote some time each day to learning more about Him and seeking His guidance in your life?

2. Does your previous classwork reflect your best efforts? Does your sense of duty and responsibility to yourself and your supporters encourage you to do and be your best, by God's grace?

3. Are you willing to get your hands dirty if necessary and cheerfully do whatever job or community outreach is assigned to you? Will you meet your appointments on time, regardless of your mood at that moment? Will you speak positive words of encouragement to others rather than negative ones?

4. Weimar Academy's guidelines on dress, food, social relationships, and other issues are unique. They are Biblically-based and designed to nurture a deeper desire for and understanding of God and eternal realities. Are you willing to lay aside any habits, practices, or desires that would hinder you as you seek to gain clearer and deeper communication with God? Are you

willing to appear different when the world's styles or practices conflict with Christian modesty or propriety? Are you willing to test the results of a more healthful diet and lifestyle?

To Apply

As you prayerfully study this catalog and review the questions above, decide whether or not Weimar Academy's unique program is for you. If your answer is affirmative, follow these steps:

Admissions Process

All necessary admissions forms are available on our website at www.weimaracademy.org or by calling the Registrar and Admissions Office at 530-422-7947.

Step 1 (Student): Read the entire Student Handbook. Accurately complete the following forms.

Student Application Form – All pertinent information must be filled out. Personally complete the student essay by filling the two pages included in the application.

Admissions

Step 1 (Parent):

Read the entire Student Handbook. Complete the following admissions forms accurately and completely.

Financial Plan Worksheet – Must be completed showing resources to pay for your child's schooling or how you plan to obtain resources. Sponsor forms are available if needed. Your application will not be processed until this is complete.

Parent Portion of Application:

Thoughtfully complete, sign and date.

Step 2:

Deliver a Reference Form to each of the following three persons who will send in recommendations for you. These are available on our website.

- A teacher who has taught you within the last two years.
- Your local Seventh-day Adventist pastor or head elder.
- Your current, or most recent, employer or work supervisor.

If one of these categories does not apply, choose another person (no relatives) to complete a reference form. Each person should have known you for at least two years. Since no final decision can be made on your application until these forms are in your file, please encourage those recommending you to respond as soon as possible. As a courtesy, you may want to supply a stamp.

Step 3:

Request that copies of your

transcripts (cumulative grades) be sent to Weimar Academy by the registrar(s) of the elementary and/or high school(s) you've attended from the last 3 years, no further back than 7th grade. Our request form is online for your convenience.

Step 4:

Students coming for the first time must submit an up-to-date medical exam report and official immunization records.



Step 5:

First-time applicants must submit a nonrefundable \$25 fee with the application.

Step 6:

Mail the Admissions forms to:

Director of Admissions
Weimar Academy
P.O. Box 486
Weimar, CA 95736

Or fax the forms to 530-422-7910

Step 7:

When all Admissions documents have been received, you will be notified and an interview (by phone or in person) will be scheduled.

Conducted by the appropriate dean and/or another qualified staff member, this interview is designed to determine the fit between you and Weimar Academy.

Acceptance to Weimar Academy is based upon the student's answers to questions on the application form, a personal interview, grades from previous schools, references from teachers and other adults, and financial accountability.

Non-Discrimination Policy

Weimar Academy admits students of any race, color, nationality or ethnic origin to all rights, privileges, programs, and activities made available to students at the school. No administrative discrimination for educational policies, scholarships, work-education, extracurricular activities, or any school program is allowed.

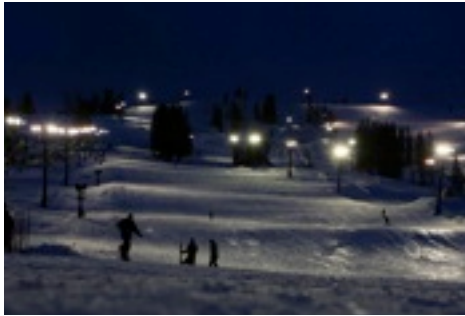
Special Needs Students

Weimar Academy is not equipped or staffed to provide special education. Therefore, the school may not be able to accept students with significant spiritual, educational, physical, or social challenges.

Home Scholars

Weimar Academy welcomes applications from young people who have been properly home schooled. Standardized test scores or entrance exams are required for students lacking official transcripts. Please follow up with the registrar for details regarding credit transfers.

Admissions



Part-time Students

1. A part-time student at Weimar Academy is allowed to take up to 20 units of classes per year. Students taking more than 20 units will be considered a full-time student.
2. A village student who wants to benefit from some of the Academy classes must make arrangements with both the Student Finance office and the staff of Weimar Academy.
3. The Academy is not responsible to maintain full records for part-time students. However, academic records of classes taken at the Academy, records of attendance at Academy classes, and Academy discipline records will be maintained.
4. Part-time students (along with their parents) are responsible for their own academic program. The Academy may advise, if desired, but takes no responsibility for the education of the students beyond the specific classes for which they are enrolled. As such, part-time students will not graduate or receive diplomas representing the completion of a Weimar Academy educational program.

5. Part-time students are required to attend only those classes for which they are enrolled. They are not required to attend worships, chapels, field trips, or other activities of the Academy. For camp-outs, agape feasts, mission trips, etc., advance permission must be obtained from the Academy Administration. Fees may apply.

6. Part-time students must abide by all Academy policies when attending Academy functions including classes, required work, meals, recreation, and worship services.

International Students

Weimar Academy is authorized under federal law to enroll non-immigrant alien students. The school welcomes international students who would like to learn and study on its campus. Transcripts or proficiency tests will determine a student's grade placement. Applicants from outside the United States should expect the application process to take extra time and should plan accordingly when applying.

Any student whose parent or guardian is not a permanent or long-term resident in the United States must have a US-based sponsor family that will act as the student's guardian and provide a home for the student during home leaves and vacations.

Obtaining a Student Visa

Applying for a student visa must be done after acceptance to Weimar Academy, and upon receipt of an

official Acceptance Letter and I-20 document. The admissions process should be completed early, as it takes time to obtain a student visa. In order to qualify for a visa the student must:

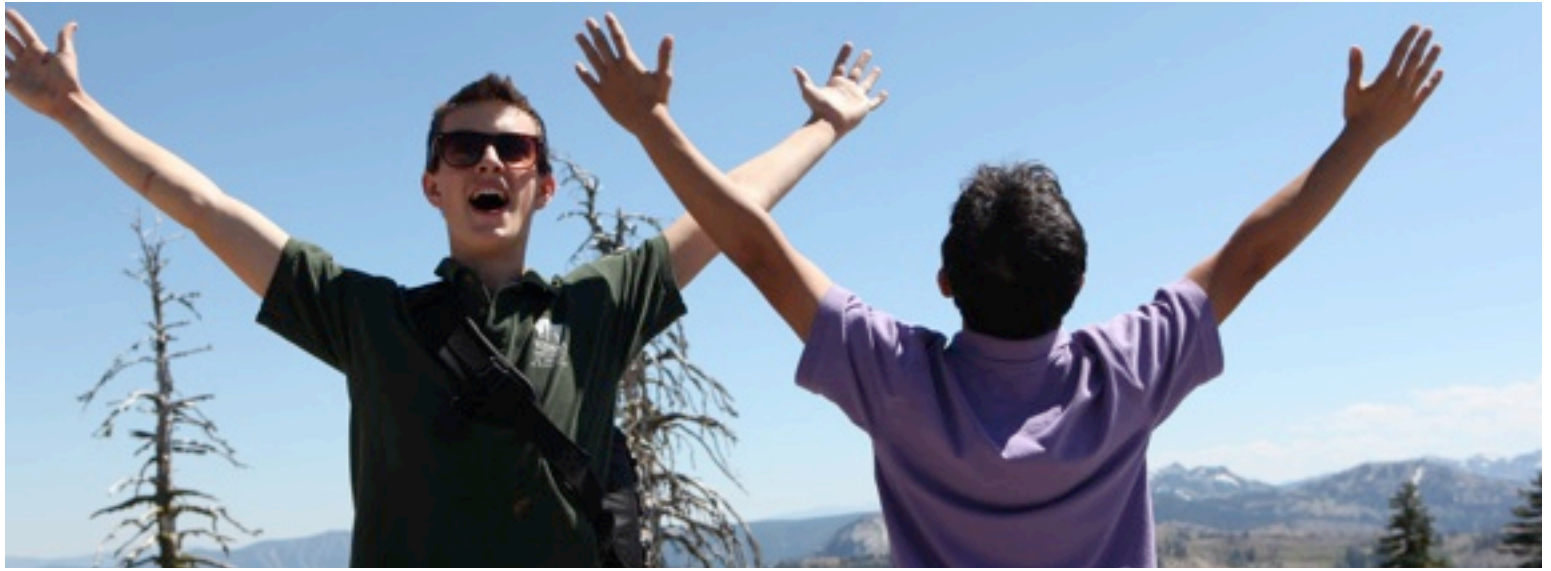
1. Be willing to take a full class load,
2. Work on campus for the required hours each week.
3. Prove ability to pay for study before coming to this country, and
4. Have definite plans to return to their country of citizenship.

Registration Procedures

All students should register on the day indicated on the school calendar and begin classes on the scheduled first day of the semester.

Students who register two or more weeks past the beginning of the semester will be permitted to carry a full academic load only with the permission of the Academic Standards Committee.





Campus Life

What is it like?

At Weimar Academy, we seek a healthy balance of academic, vocational and social training, that is centered on Christ. School should be a joy to each student and we desire to foster a positive atmosphere in which our young people can thrive.

We take seriously the development of interpersonal skills and social responsibilities. Social education is an important preparation for successful Christian ministry and a stable Christian home. Students should not be so preoccupied with their study program that they fail to develop friendships with other students and Academy staff.

Some students may have the temptation to spend too much time socializing, which interferes with the primary purposes for being in the Academy. We encourage a reasonable balance in this area.

While social development is largely a personal responsibility, the Academy has specifically addressed several areas of social interaction.

Campus Parents

The administration and faculty of Weimar Academy, “parents” away from home, bring encouragement to students and initiate wise counsel as needed. They also act in each student’s best interest according to their level of maturity.



Discipline Policy

If guidelines are disregarded, Weimar Academy holds the right to perform any necessary disciplinary actions that we deem are in the best interest of the student and the school. When disciplinary issues arise, we follow the 3 step process listed below. Certain actions by students may result in the skipping of one or more steps in this process.

Step 1 - A formal verbal warning will be given to the students and their parents.

Step 2 - A written warning will be given to the students and their parents.

Step 3 - The students may be asked to withdraw from Weimar Academy.

Once again, the educational experience here at the Academy is one that allows for the utmost development of spiritual, mental, physical, and social development. Students’ choices can allow these years to be the best of their lives!

Cell Phones

Cell phone use on campus will be limited to the dorms only during specified hours regulated by the deans. Cell phones that have the capability of accessing the internet are not allowed, however they can be stored with the deans and returned when a student returns home or during off-campus activities with approval. Any cell phone used in violation of these rules will be confiscated by the deans.

Campus Life

Dating Policy

“While at school, students should not allow their minds to become confused by thoughts of courtship. They are there to gain a fitness to work for God, and this thought is ever to be uppermost.”

CT p. 100

Dating is not allowed at Weimar Academy. Students that decide to disregard this policy and pursue a relationship with another student will be addressed using our discipline policy (See Pg. 11). Certain actions by students may result in skipping of one or more steps in the discipline policy.



General Social Guidelines

1. Always stay with the group during outings or activities.
2. Don't form an exclusive relationship with any one friend (spend relatively equal time with all).
3. Avoid inappropriate physical contact.
4. Avoid circumstances that might lead staff or students to think of you and a friend as a “couple.”

5. Don't put yourself in any circumstance that might be questionable.

Evidences of an Inappropriate Relationship

1. Spending time almost exclusively with one person, with little time for others (walking/eating/studying).
2. Missing or arriving late for appointments (work/classes) because of a special friend.
3. Spending more than the average time talking or thinking about one person.
4. Causing it to become common knowledge that you and your friend are a “couple.”
5. Disregarding Weimar Academy's general social guidelines.
6. Choosing to go any place at any time that you know to be against social and school guidelines.
7. Using emotional pressure or manipulation in order to keep a special friend; expressing jealousy or using words intended to wound.
8. Expressing affection in a physical manner.

Dress & Personal Appearance

Weimar Academy seeks to heed the following counsel:

“No education can be complete that does not teach right principles in regard to dress” CG p. 419

Students and faculty are asked to dress in a manner which:

1. Reflects the sacred purposes of Christian education.
2. Represents the larger mission of Weimar Center.

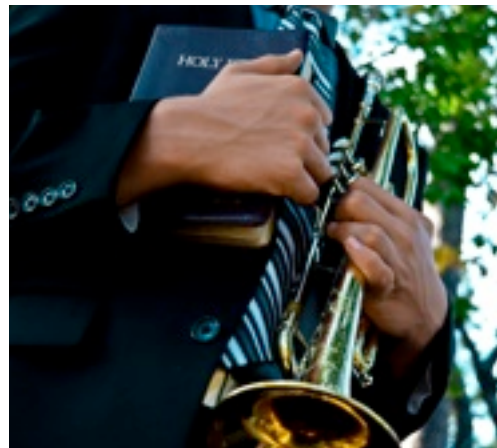
Both on campus and off, those associated with Weimar Academy are expected to positively portray the principles of God's kingdom and enhance the impact of our mission through courteous demeanor and dignified, attractive personal appearance.

“In dress, as in all things else, it is our privilege to honor our Creator. He desires our clothing to be not only neat and healthful, but appropriate and becoming” CG p. 413

Considering Biblical counsel of Christian conduct, Weimar Academy advocates the following principles of personal appearance:

A. Simplicity in Dress

Avoid carelessness, sloppiness, or untidiness and the opposite extreme of showiness, extravagance, or excessive formality.



Campus Life

B. Appropriateness

Select presentable, durable work clothes for physical work; modest, casual attire for recreational purposes, and more dignified clothing for classes, group worships, dining and office work. Choose clothing that encourages a worshipful spirit throughout Sabbath hours.

C. Modesty

Clothing should allow others to appreciate the student as an entire person rather than draw attention through immodest dress or grooming.

D. Personal Maturity & Confidence

Demonstrate self-respect, a sense of mission, and security in Christ through good grooming without supplementing such attractiveness with jewelry, conspicuous cosmetics, or faddish clothes.

E. Aesthetic Sensitivity

Select clothing and hairstyles that express a God-given appreciation for good taste, beauty, creativity and harmony. External appearance should reflect the inner beauty of spirit.

F. Role Distinction

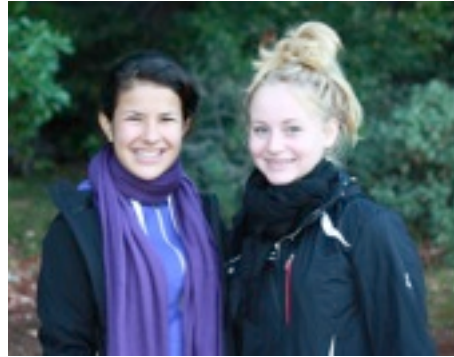
Wear clothes and hairstyles that emphasize the unique and sacred identities of men and women.

G. Lasting Quality

Select quality clothing that is practical, durable and classic style.

H. Health

Choose clothing that promotes good circulation. Avoid tight, restrictive clothes that expose arms or legs to the cold or produce unnatural posture.



Various Attire Defined:

School & Work Attire

Students are required to wear uniforms for both school and work.

The required school uniform for the gentleman is a Weimar Top, a solid, dark colored belt and solid colored dress pants.

The required school uniform for the ladies is a Weimar Top and a khaki, black, navy blue or dark grey skirt.

For the gentlemen, the pants must be worn at the waist and must not be form fitting. For the ladies, the skirt and slit must cover below the knee while sitting or standing and not be form fitting.

The required uniform for work for both men and women, is a Weimar work top and pants. Pants must be job appropriate, modest in nature, and worn at the waist.

All clothing must be in good repair with no holes or tears in them.

Weimar Uniform tops are available for purchase at the academy.

Church Attire

Men may choose to wear suits or sport coat/dress slack combinations to church with dress shirts, sweaters or vests, ties along with socks and dress shoes.

Women may choose dresses, skirts, blouses, sweaters, dressy jackets, dress shoes or sandals for their church attire.

Casual Attire

Casual attire for both men and women may include jeans, athletic wear, sweatshirts, or T-shirts.

As with all other attire, casual clothing should be appropriate, neat, well-maintained, and clean.

Church attire is to be worn by students to:

- 1) Friday evening Vespers
- 2) Church on Sabbath Morning
- 3) Sabbath lunch in the cafeteria.

Clothing worn Sabbath afternoons should suit the activity (check with deans).

Campus Life

Casual attire may be worn by students at the following places and times:

- 1) In the Library
- 2) On the Trails
- 3) Saturday Night Activities
- 4) The cafeteria, except on Sabbath.

Specific Applications:

- A. For the gentlemen, hats are appropriate for outdoors, but they are not to be worn in any building.
- B. Ladies should remember to wear modest, loose fitting, feminine, and not baggy or sloppy slacks, pants or jeans. No jeans or sweat pants should be worn under dresses at any time. For cold weather, knee socks, heavy tights or leg warmers are appropriate undergarments.
- C. Clothes worn for outreach should suit the activity. Check with your outreach team leader.
- D. Clothes worn for work education should suit the work being done by the student. Check with your work supervisor.
- E. Shirts, blouses and tops must cover the midriff at all times. Untucked shirts, blouses or tops should hang to the hips when wearing pants or a skirt.
- F. Dresses and skirts should be a modest length and cover the knee, at all times, without pulling or stretching, even while seated. Sleeveless tops or tops with low necklines in the front or back, are not acceptable. Students should be able to maintain modesty even when stooping or bending. Slits in skirts and dresses should be lower than the knee while sitting or standing.
- G. Shorts are not appropriate campus attire except for private yards, exercising on the trails, and specific activities. Shorts worn at approved functions should reach the knee and must not contain writing across the back. Swimsuits are only appropriate in secluded private yards or in unmixed groups.
- H. Shoes that are worn at Weimar Academy should be clean, in good repair, and connect well with the outfit being worn. Students are expected to know how to discern when and where certain styles of shoes are appropriate and when they are not. If they need help in this area, the faculty at Weimar are always willing to assist them in their decision making process. In general, business casual shoes are very appropriate when attending classes in the academy center.



It is important that a Christian campus have a minimum standard of dress. While we want to be careful to allow freedom for the individual, the following guidelines help to form our campus culture and must be followed. Some specific articles of clothing are not acceptable for campus attire at any time.

Clothing that advertises alcoholic beverages, rock group emblems, or suggestive slogans, or anything out of harmony with Christian standards, is not permitted at any time.

In conclusion, clothing is to be selected primarily for its potential to minister to others and for personal health, while recognizing God-given individuality and practical judgment. The aim in personal appearance should be to reflect our Christian mission, rather than express our own personal independence.

"Therefore, whether you eat, or drink, or whatever you do, do all to the glory of God."
1 Cor 10:31

Dormitory deans will be happy to assist any student who has difficulty understanding the proper application of this dress code.



Campus Life

Housing Policy

Students enrolled at Weimar Academy must live in Academy dormitories, not with friends or relatives in the area or in Institute housing unless they are an approved village student. Students whose parents are Institute employees may live with their parents. All non-dormitory students are expected to cooperate with all applicable regulations of the school.



Dormitory Living

Group living situations provide excellent opportunities to practice personal courtesy, cooperation, social responsibility, and thoughtfulness of others' needs. All students should respect the privacy, personal feelings, and personal property of roommates and neighbors. While the Academy desires students to have significant freedom in developing interpersonal relationships, dormitory living requires some guidelines and codes of conduct for efficiency and personal comfort.

Deans

The deans are responsible for protecting the rights, safety, and

privacy of each resident. Both the head and assistant deans have the right to set specific guidelines that will best provide a safe, pleasant, home and spiritual environment.

Closet and Dresser Storage Space

There is limited closet and dresser space in the dorm. Please make sure you do not bring more than is necessary. We recommend that students plan carefully (call if you have any questions) and bring only the most necessary items for one school year.

Curfew

Adequate rest is necessary to properly function in Weimar Academy's schedule. Therefore lights go out at 9:30 p.m. Any exception must be approved by the dean.



Dorm Rooms

Dormitory rooms are the students' homes away from home. They may decorate to their taste as long as they reflect Christian lifestyle and ideals. Inappropriate magazine pictures, posters, or advertisements should

not be brought to the dorm. Framed pictures or posters of good taste may be used.

Heavy pictures or other large hanging items should be avoided. Please follow up with the dean for mounting pictures to walls and attaching lightweight items to doors.

Each student will be assigned a bed, a chest of drawers, and a desk; closet space is shared. Roommates share equal responsibility for the care and condition of their rooms and furnishings. A \$75 cash deposit must be made at the time of registration to cover any cleaning or repair costs. The deposit will be refunded if cleaning or repairs are minimal.

Electrical Items

To ensure safety, meet insurance liability, and avoid the presence of rodents and insects, students are asked not to keep, prepare, or eat food in their dorm rooms. A kitchen area is provided in each dormitory where food may be stored and eaten. All electrical appliances should be approved by the dean. Curling irons/straighteners, blow dryers, hot rollers are allowed. Students may bring their own lamps and light



Campus Life

Laundry Facilities

There are two washers and two dryers that students may use in each dormitory. They will also be supplied with laundry soap and dryer sheets. Liquid bleach is not allowed in dorm rooms. Washers and dryers are not to be used during Sabbath hours (sundown Friday until sundown Saturday).

Pets

Because our extended homeleaves and mission trip time off, all pets are not allowed in the dorms.



Room Check

Order is the first law of heaven, where everything is done “decently and in order” 1 Corinthians 14:40 Deans will check dorm rooms routinely and appropriate consequences are given by the dean to ensure cleanliness.

Roommates

Deans are in charge of assigning roommates and preferences will be considered. Deans do have the right to move students during the year. Requests for roommate changes may be submitted to the dean for consideration. A student may sleep

in another student’s room only with approval from the dean.



Signing Out

In the case of an emergency at home or elsewhere, the school may need to locate a student immediately. For that reason, students must ask permission and sign out when leaving a dormitory for any reason other than classes, work assignments, worship, or other regularly scheduled Academy activities. Signing out does not imply permission to leave; it is merely a record of destination.

Students who wish to leave the campus with anyone other than a staff member or their immediate family must have written permission from their parents.

Absence from the dormitory at any time without permission will be considered a serious mistake. Leaving the dormitory without permission between 9:00 p.m. and 5:30 a.m. will be grounds for dismissal.

Study Hall Periods

Study hall periods are provided for students each weeknight in the dormitories.

Telephones

Each dormitory has two phones available exclusively for students. Evenings are the best time to reach most students, either at a dorm or at the Academy Center study hall, but no calls will be accepted during dormitory worship time.

Town Trips

A monthly town trip for each dorm enables students to purchase personal items as necessary. Additional town trips may occur with the dean’s permission and at the student’s expense. The student must secure an approved driver.

For all non-school-related travel, the deans’ permission will be based upon the parents’ written permission slips (signed at registration) that indicate which drivers their students may travel with as well as a verbal approval from the parent.



Campus Life

Motorized Vehicles

A dorm student who is of legal age, is a licensed driver, and who must have a motorized vehicle at the Academy for transportation to and from home, may submit a written request to the principal prior to bringing the vehicle on campus. This request should state the need for a vehicle and proof of adequate liability insurance coverage, and it should be signed by the parent, guardian, or student (in the case of an 18 year-old student who is no longer financially dependent upon their parents).

At registration the student will sign a commitment that they will use the vehicle only for transportation to and from their home during approved breaks and that they will follow the applicable rules.

Between home leaves, the vehicle must remain parked in the assigned student parking area, and the keys as well as the license plate must be entrusted to the student's dormitory dean.

Staff/Village students will be under their parents' regulations for their personal use of a vehicle outside of school hours. However, the Academy asks that staff students not transport dormitory students at any time. Campus work vehicles may be used with permission from the work supervisor but cannot be used to transport other students except under the supervisor's instructions.

No students are to ride in the back of trucks or on trailers (or any other

non-enclosed vehicle). California state law says this is illegal unless restraints (seat belts) are provided. State law also requires seat belts while riding in any private vehicle on public roadways.

Non-Motorized Transportation

Bicycles are a helpful means of transportation from the Academy to the main campus. They may be used freely on roadways (and on Sidewalk Road) but not on lawns or sidewalks. State law and insurance requires that helmets be worn at all times while riding bikes. For safety's sake, students are not allowed to give rides. Students must assume responsibility for the security of their own bikes. Bicycles may not be ridden after dark unless they are equipped with appropriate headlights.

All safety signs on campus that apply to vehicles also apply to bicycles.

Hand turning and stopping signals should be used on paved roadways.

Due to insurance regulations, skateboards are not permitted on campus.

Music

At Weimar, we love to sing and praise God. Our students are encouraged to sing quality hymns and spiritual songs that uplift and center on praising Him and Him alone. We believe that sacred choir, vocal, and instrumental music helps you maintain a living connection with God. Many hymns and sacred

songs are prayers and "prayer is the breath of the soul" MYP p.250. Songs that are biblically-based cause you to meditate upon the Word of God which is the only safeguard against the deceptions of the enemy of God.

According to the 17th edition of the SDA church manual p.180, "Great care should be exercised in the choice of music. Any melody partaking of the nature of jazz, rock, or related hybrid forms, or any language expressing foolish or trivial sentiments, will be shunned. Let us use only good music in the home, in the social gathering, in the school, and in the church." The following styles are related to the hybrid forms of jazz and rock: country, rhythm and blues, hip hop, rap, indie, electronic dance music, pop, soul, and their "Christian" counterparts.

We understand that music is currently a controversial topic in our society today. Weimar Academy does not wish to make this issue a divisive one, but chooses to focus on the concept of "Something Better" as emphasized throughout the Bible and the Spirit of Prophecy. Students who choose to attend the academy, do so with the understanding that this is the direction the academy has chosen to go in and agree to respect that decision, as well as support it.



Campus Life

Probationary Period

All new students at Weimar Academy are accepted on a probationary basis for the first six weeks of attendance. We desire the student and parents to be happy with their experience at Weimar, and designate this time for both the family and school to evaluate whether the placement is a good match. During this time, the student can be dismissed and a pro-rated portion of their tuition paid, minus the registration fee, will be refunded based on the date of their departure. Weimar may dismiss a student for the following reasons:

1. The student and/or parent/guardian have not cooperated with the Weimar Academy staff regarding the student's discipline needs.
2. The student and/or parent/guardian have not supported the policies stated in the Weimar Academy Handbook.
3. The student has not been fulfilling their academic requirements at the academy.
4. The responsible parent/guardian has been late paying the agreed upon tuition/fees.

Student Participation

When a student registers for attendance at Weimar Academy, they are expected to participate fully in all planned extracurricular programs (spiritual or social activities and recreational outings).

Technology

Technology is a great tool that can be used for God's glory when used properly. Students enrolled at Weimar are trained how to use this technology for the good of everyone. All computers are used on a limited basis and are monitored closely using software that allows us to keep track of student's choices on the computer. For more information on our technology program, please refer to technology agreement located online at www.weimaracademy.org.

Vacations and Home Leaves

All students must leave the campus during scheduled home leaves and vacation periods. A student whose home is outside the continental United States needs to have a prearranged host family with whom to stay during home leaves and holidays.

Any portion of a day missed surrounding a home leave will be subject to the guidelines in the attendance policy. If a situation arises which requires the student to leave early or to take a leave other than one scheduled, parents must make arrangements directly with administration. Since transportation of the student will happen out of regular airport/bus station runs, the student will be responsible for arranging their own transportation.

A leave form must be filled out and returned to the dean before a leave begins. We request that all leave forms be submitted one week in advance of your departure date.

Failure to do so, may result in your leave request being denied. This form will indicate the destination, a contact number while away, the form of transportation to be used, exact days/times of leave/return, and whether there is a need for Academy assistance to or from the train, bus, or plane terminal.

It is recommended that students remain on campus on all weekends other than scheduled home leaves/vacations. Students whose grades are C or above may get approval to leave at other times if a written request (and parental approval, if necessary) is submitted to the appropriate dean.

If a student wishes to visit the home of someone other than their parents/guardians during a home leave, a written invitation from the host family and permission from the student's parents, must be received by the dean.

The Academy also reserves the right to deny a leave request if the staff deems it to be detrimental to that student in any way. Because students are part of Weimar Academy for the entire school year, the school reserves the right to take disciplinary action if it learns of a student's involvement in inappropriate behavior/activities away from the campus at any time, including home leaves.

Arrangements for a student to leave early or return late must be made with administration. Classes missed will be excused, but it will be the student's responsibility to work with the teacher to make up work.

Campus Life

Village & Staff Students

1. Village and staff students must abide by all Academy policies when attending Academy functions, including classes, required work, recreation, and any other activity.
2. Village and staff students are not required to attend dorm worship, but they are required to attend field trips, choir trips, camp-outs, banquets, agape feasts, and other regularly scheduled activities of the Academy. Village or staff students shall be charged the prevailing meal rates during Academy functions.
3. If a student does not plan to attend a school-scheduled activity, the parents of the student should contact the school with their request before the planned family occasion.
4. School functions are part of the student's life and attendance at these activities is required.
5. Before a non-dorm student spends a night in the dormitory, the dean must receive and approve written or verbal permission from the parent or guardian.
6. Dorm students are not to stay overnight in a village or staff student's home, unless receiving permission from the staff prior to the event.
7. At no time are village or staff students to take a dorm student for a ride in their vehicles, on or off campus.
8. Village students who own cell phones are asked to shut them off

during school hours. Cell phones that are a distraction or that are used while on campus without permission will be confiscated.



Visitors

Parents are welcome to attend school functions during the year. Please confirm plans to visit with the dean or the registrar's office. Weekends are the best time for a visit because weekdays are filled with classes, work and study obligations.

Upon arrival on campus, visitors should check in with respective dean and inform them if they plan to take a student off campus. Family members of the opposite sex who need to enter a particular dormitory must check first with the dean of that dorm. Visitors should comply with all Weimar Institute and Academy guidelines while on campus.

Contact Information

General Number – 530-422-7947

Fax - 530-422-7910

E-mail academy@weimar.org

Student Finance - 530-422-7920

E-mail - studentfinance@weimar.org

Ladies' dorm (530) 637-4111,
Extension 8100 or 8114.

Ladies' Dean (530) 422-7991.

Men's dorm (530) 637-4111,
Extension 8200 or 8220.

Men's Dean (530) 422-7992.

All mail should be addressed to:

Weimar Academy

P.O. Box 486

Weimar, CA 95736.

Packages sent by UPS or other non-U.S. Postal Service carriers require the following street address:

20601 West Paoli Lane

Weimar, CA 95736.

Weimar Institute operates an on-campus mailroom where students can mail letters and packages and purchase stamps. Mail addressed to the students is given to the deans for distribution.

Website:

www.weimaracademy.org

Come and See Us!

If you are interested in studying at Weimar Academy, and have an opportunity to come for a visit, please call and make plans to stay with us for a day.

We'll give you a tour of the campus, arrange for you to sit in on classes, provide meals and give you a room for the night. So come and see us! Talk with students and faculty, take a look around and experience Weimar Academy for yourself.

Campus Life

Things you may want to bring:

1. Your Bible
2. Conflict of the Ages series (5 books) by Ellen G. White
3. Pillow and two pillow cases
4. Two sets of twin sheets
5. A bedspread and blankets (non-electric)
6. Towels and washcloths
7. Toiletries
8. Bathrobe and slippers
9. Mending kit
10. Table lamp or study lamp (with bulbs)
11. Rain gear (boots/ waterproof shoes, raincoat, umbrella)
12. Durable, practical walking/hiking shoes
13. Wastebasket & Laundry Basket
14. Laptop Computer (Students have access to school issued computers. Students must adhere to the school's technology policy while using their computer at school, and have the school's filtering software installed on it as well. Please consult the staff and the technology policy for more information.)
15. Battery-powered alarm clock
16. Decorative/family pictures
17. Camping gear (tent, sleeping bag, hiking boots, backpack, flashlight, water bottle, etc.)
18. Clothing for school, work, Sabbath, and recreation
19. Cold weather clothing & undergarments.
20. Ski equipment and clothing (if desired)
21. Bicycle and helmet (if desired)
22. School Supplies (See School Supply List)

Things not to bring:

Examples are given in brackets. The examples are not an exhaustive list, only a generalized illustration of what NOT to bring.

1. Fire- or explosion-producing materials [firecrackers/ matches/ cigarette lighters/ candles/ kerosene lamps/ incense/ etc.]
2. Weapons of any kind [guns/ knives/ etc.]
3. Electronic entertainment [televisions/ videos/ Video iPod-like devices/ computer games/ gameboys/ game software, etc.]
4. Personal listening devices [DVD players/ iPods/ mp3 players/ boom boxes or stereos/ etc.]
5. Secular and/or "Christian" music recordings that have the same sound and rhythm as secular, contemporary music [CDs/ DVDs/ mp3s/ etc.]
6. Illegal chemical substances (any prescribed or over-the-counter drugs will be held for the student by the dean)
7. Playing cards/ games involving dice or gambling
8. Novels, whether secular or religious fiction
9. Hair coloring that is not natural
10. Jewelry [pins/ necklaces/ bracelets/ anklets/ rings/ earrings, etc.]
11. Skateboards (due to insurance regulations)
12. Refrigerators
13. Meat/ dairy products/ caffeinated drinks [sodas, coffee, teas, etc.]
14. Tacky clothing that's frayed, patched (old or new), or drags the ground



Academics

Academy Policies

Academic Accountability

Letter grades will be given in all classes. Students with a grade point average of 2.0 or below and/or any combination of two D's or F's at the end of the quarter will earn academic probation. If a student earns academic probation for two consecutive grading periods, the student may be asked to withdraw from school. Students with a D or F in any class will have their extracurricular activities—recreation, town trips, etc.—modified or restricted to allow for more study time. They will also be required to attend a mandatory study hall in the evening.

Acceleration

Weimar Academy understands that people learn in different ways and at different rates. Students seeking to finish high school at a faster pace can submit an acceleration request to the academic standards committee. The request should include written permission from their parent or guardian and include a detailed plan of how they will achieve their goal. Once all of this information is submitted to the committee, a

decision will be made and the applicant will be notified of the committee's decision in writing..

Add/Drop Classes

Students are responsible for making desired program changes with the registrar. Classes may be added until the end of the second week and dropped until the end of the third week of each semester.

- **Add:** The student adds a class after securing the registrar's approval from the appropriate teacher(s). If a class is added on or before the prescribed date, the student will receive full credit for the class.
- **Drop:** The student may drop a class after securing the registrar's and their parent or guardian's approval. The registrar must receive written approval (by regular or electronic mail) from the parents or guardians before signatures from teachers can finalize the drop process. If a class is dropped on or before the prescribed date, the student will receive no credit or grade for the dropped class. However, if withdrawal occurs after the prescribed date, the student will

receive the grade they have earned thus far. It will be recorded as either a WP (withdrawal, passing) or a WF (withdrawal, failing) and will appear on the student's permanent transcript.

Attendance Policy

Students are expected to attend all of their scheduled appointments while at Weimar. Our attendance policy is available on our website and each student will be provided with a copy of that policy at orientation.

Challenging a Course

Fee: \$35.

Students interested in taking a challenge exam are requested to meet with the Registrar to schedule the exam and payment of the fee (s). In order for a student to successfully pass a challenge exam, they must receive a 75% or above of the possible points. If a student successfully challenges a class, the student will be given a "P" (for Pass) and it will be recorded on their transcript. Passed challenge exams are to be kept in the student's cumulative folder, failed exams may be disposed of after 30 days.

Academics

Challenged classes will not be included in the calculation of the student's GPA. Students are allowed to challenge one course at a time from our institution. Any request for additional retakes of challenge exams will be reviewed and a decision rendered by Academic Standards Committee. Staff members will not be held responsible for tutoring for these tests. Challenge exams will be developed/selected by Weimar Academy faculty with expertise in the requested course. Weimar Academy does not distribute exams.

Class Load

A student will be considered full-time if he carries a minimum load of 25 units per year of academic courses (not to include music, outreach, agriculture or work education). These 25 units must include a Bible class of 10 units. A student must be full-time in order to live in an Academy dormitory. A prearranged exception may be a senior who has an excess of units. The senior may be encouraged to take additional classes from Weimar Academy in order to give them sufficient challenge.

Correspondence/Summer Work

Registered students desiring to take a correspondence, online, or summer school course for academic credit to be transferred to Weimar Academy should submit a written request to the registrar prior to applying for such work. Credit is not guaranteed and will not be given until approved by the academic standards committee.

All courses required for graduation from Weimar Academy must be earned from approved schools and be completed and grades received by the end of April of their senior year.

Grade Reports

Each school year is divided into two semesters. At the mid-point of each semester, progress reports will be sent to the student and their parents/guardians. Semester grades are used to determine the student's official grade point average that will appear on their transcript. Grades can always be checked on our online grading program www.engage.com.

Grading System

Weimar Academy uses a standard grade point average (GPA) system.

Other grades may include:

WP—withdrew passing WF—
withdrew failing P—passing
S—satisfactory U—unsatisfactory

Incomplete/Back Assignments

Students will have the opportunity to make up work missed for excused absences. The student is responsible to obtain make-up work from the teacher. The number of days to turn in make up work is the equivalent of the days missed. For Example: 1 day missed = 1 class period to make up the work. If the absence is unexcused, make- up work will not be allowed. An Incomplete grade (I) will be given only in the case of an extended excused absence (major illness or family emergency). The student must make up the

incomplete class work no later than ten school days after the next grading period begins. After that time the registrar will record the student's grade earned during the normal grading period.

Unacceptable Work Policy

If a teacher deems an assignment that a student has turned in to be unacceptable, then the teacher has the right to refuse the assignment. Once an assignment has been refused, it will be returned to the student so that they have the opportunity to fix and resubmit the assignment. Typically, an assignment will be refused if it appears that the student did not put forth an acceptable amount of effort in completing it. The student will receive the grade of zero for that assignment, until it is resubmitted and then evaluated by the teacher. Assignments that are refused and then resubmitted will not be considered as being submitted on time, and will receive a late penalty as well.

Late Work Policy

Where unexcused late work is accepted, assignments that are turned in after the due date will receive a 25% deduction in their grade. Assignments turned in two weeks after the due date may not be accepted by the teacher and will result in a final grade of zero for that assignment.

Academics

Student Leadership

Students seeking election to student leadership or to serve as members of administrative or academic committees must be approved by the staff prior to running. Once elected, they must consistently support Weimar Academy's principles and maintain at least a 3.0 GPA. Students in leadership positions must maintain these standards throughout their term of service.

Transcripts

Weimar Academy typically accepts all transfer credits from approved accredited sources. The acceptance of credits from non-accredited school settings will require the submission of a course validation form available from the registrar.

Approved non-accredited credits as well as international credits will count towards meeting your graduation credit requirements at Weimar Academy, but will be excluded when factoring your official Weimar Academy GPA.

Weimar Academy issues transcripts of a previous student's academic records upon receiving a written request from the student or from the school the student wishes to attend. Telephone requests cannot be honored. The first transcript is issued without cost. A \$5 fee will be charged for each additional transcript.

Transcripts and grades will be issued as long as the student has a zero balance on their account..

Work Education Program

Weimar Academy seeks to train our students in developing an excellent work ethic by offering three different programs:

1. Students may be employed on campus, while learning a skill and being paid by the institute.
2. Students may be enrolled in a non-paying, agriculture class, earning academic credit, while learning work ethic skills.
3. Students may submit to the work education committee, an

alternative, off-campus, work proposal. Contact administration for more details.

Students can be asked to change programs if they are not meeting the expectations/demands/requirements of the specific area.

Paying campus jobs are limited and first priority will be given to the students who exhibit an acceptable work ethic. Job placement for each student is decided by the work education director and the academy administration.

Work Education Units

Academic credit is earned for every semester the student is involved in the Work Education program. The student's work grade will be based on attendance, the supervisor's evaluation, and accomplishment of work assigned by the work supervisor.

Weimar Academy reserves the right to make amendments to this handbook at any time.



Academics

Diploma Requirements

General Education Diploma

A Weimar Academy general diploma requires the completion of 220 credits with a minimum GPA of 2.0. Many colleges/universities will permit a general diploma to meet their entrance requirements. The 220 credits for a general diploma (10 units equal to 1 year of coursework) will include the following:

40 credits of English	20 credits of Math (Algebra I required)
20 credits of Social Studies	20 credits of Science (Biology or Equivalent Required)
5 credits of Government	5 credits of Stewardship
10 credits of Computer Science	10 credits of Foreign Language
5 credits of Health	85 elective credits

College Preparatory Diploma

Weimar Academy offers a college preparatory program designed to meet college/university entrance requirements. Students should plan their programs so they meet the specific requirements of the colleges/universities they plan to attend. A college preparatory diploma is earned upon completion of 250 units with a minimum GPA of 3.0. The 250 units (10 units equal to 1 year of coursework) include the following:

40 credits of English	30 credits of Math (Algebra I required)
20 credits of Social Studies	30 credits of Science (Biology or Equivalent Required)
5 credits of Government	5 credits of Stewardship
10 credits of Computer Science	20 credits of Foreign Language
5 credits of Health	85 elective credits

The following classes are required for every year the student attends Weimar Academy:

Bible Agriculture Health Work Education Music

Academics

Class Offerings

English I-IV
 Bible I-IV
 Algebra I/II
 Geometry
 Pre-Calculus
 Computers

Integrated Science I/II
 Chemistry
 Physics
 Great Controversy I/II
 Government
 Stewardship

Agriculture
 Spanish I/II
 Health
 Choir
 Orchestra
 Work Education

Suggested 4-Year Plan for Weimar Students

Freshman Year

English I
 Algebra I
 Bible I
 Spanish I
 Integrated Science I
 Computers

Sophomore Year

English II
 Geometry
 Bible II
 Spanish II
 Integrated Science II
 Great Controversy

Junior Year

English III
 Algebra II
 Bible III
 Chemistry
 Great Controversy II

Senior Year

English IV
 Physics
 Pre-Calculus
 Bible IV
 Stewardship (1 Semester)
 Government (1 Semester)
 Health (1 Semester)

